

# PROJECT AND SKILLS SUMMARY

William L Ricci, Founder-CEO of Willow River Solutions and BioconX Systems

# INTRODUCTION

- Entrepreneur and private investor focusing on AI, cloud, data migrations, system integrations, and automation to build intelligent solutions bringing value to business and clients.
- With over eight years of experience as a CEO, founder, and solutions architect at Willow River Solutions, I lead a company that offers an array of products and services for AI, compliance, cloud, data, and automation to multiple industries, including life sciences, medical device, finance, education, and insurance. My mission is to help clients leverage the power of AI, cloud, data migration, integration, and automation to build intelligent solutions that bring value to their business and customers.
- I have a strong background in IT service management, enterprise application lifecycle, infrastructure, and regulatory compliance. I have successfully migrated multiple companies and systems to cloud services while maintaining GxP compliance (21 CFR Part 11, Annex 11) and implementing change control and maintaining a compliant state. I also work extensively with regulatory activities, such as computer systems validation, infrastructure qualification, and implementing secure global solutions for life science information collection, processing, and reporting.
- I have expertise in business and system requirements, gap and process identification, process development, technical documentation, custom development projects, and database design and administration. I lead and mentor technical teams, develop and manage budgets, and maintain vendor relationships.

# CURRENT PROJECTS



**National Compounding  
Pharmacy**  
Azure Platform, Data  
Consolidation, Analytics,  
Python Development



**Cyber Charter School**  
Azure Platform Management

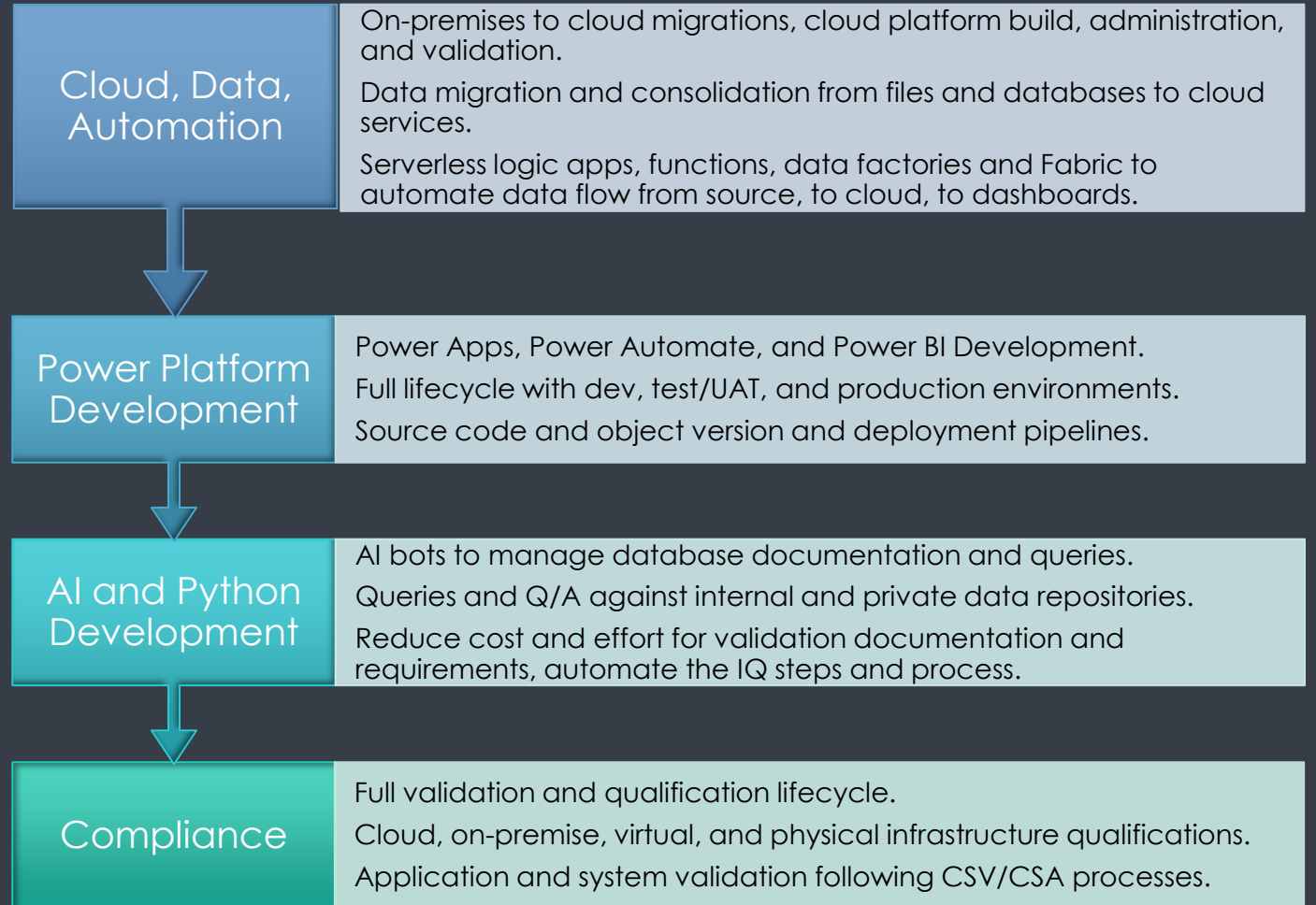


**Sheriff's Office (MN)**  
Data Migration and  
Consolidation

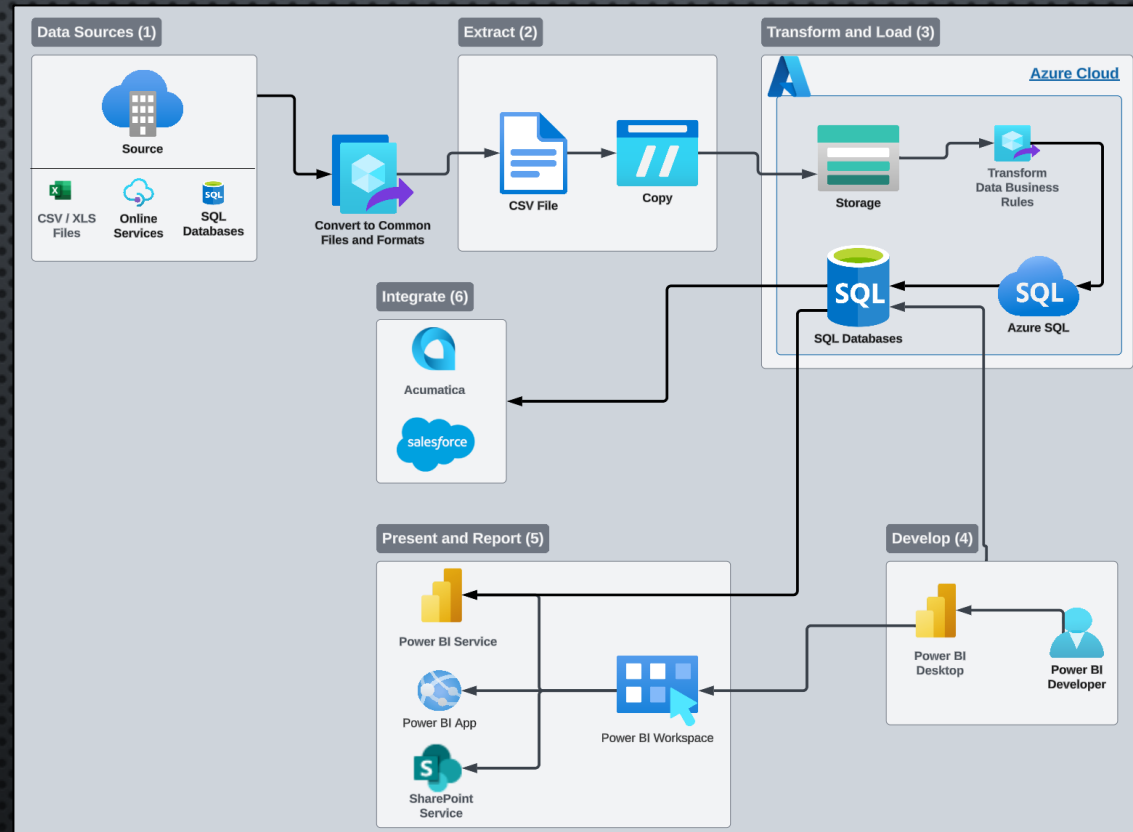


**Fully Integrated Biotech**  
Infrastructure Qualification  
and Process Optimization

# SERVICE OFFERINGS



# EXAMPLE SOLUTION ARCHITECTURE



# SKILLS AND TOOLS

- **Databases and Tools:** SQL 2008-2022, Power BI, Navicat, Dataedo, RedGate Toolbelt, SQLDoc, Monitor
- **AI:** OpenAI (API), Claude (API), GPT-Trainer, GitHub Co-pilot for VSCode
- **ML & Development:** Python3, numpy, pandas, scikit-learn, NLTK, seaborn, matplotlib, sqlalchemy, pypyodbc, streamlit, Azure DevOps, GitHub
- **Public Cloud - Azure:** VMs, Azure Container Apps, Azure SQL, SQL on VM, Virtual Networks, Peering Connections, Synapse Analytics, Data Factory, Pipelines, Logic Apps, Microsoft Fabric
- **Public Cloud - AWS:** EC2, EBS, S3, Glacier, VPC, Elastic IPs, Security Groups, Peering Connections, CloudWatch, CloudTrail, AWS Config, CloudRanger, Postgres RDS, Oracle RDS

# MORE INFORMATION

- LinkedIn: <https://www.linkedin.com/in/wricci/>
- Corporate: <https://willowriversolutions.com/>
- Personal: <https://williamricci.com/>